



700 S. Hathaway St. Unit E
Banning, CA. 92220
web: <http://www.imsproducts.com>
Orders/Information: (951) 653-7720

HONDA FUEL TANK
CRF450R/RWE (21-25)
CRF250R (22-25)
2.6g

IMS Tank ID # CR-33B
IMS Part #112257 / 212257

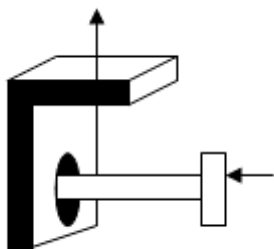
PARTS LIST

- (1) Fuel Tank
- *(1) Gas Cap (322100-BLK)
- *(1) SEAL (322101)
- (*Excluded on Dry-Break*)
- (6) 6x12 Small Flange Bolt for Front and Rear Bracket (MTP-6999106012)
- (4) 6x16 Small Flange for Fuel Pump (MTP-6999106016)
- (1) O-Ring Viton #D-335 (MCM-5267T286)
- (4) Flat Washer/ Spacers for EFI Pump Sleeve-Washer Combination (MTP-125819043001)
- (4) Plastic Collar Washers (MCM-90061A015)
- (2) "L" Brackets w/Plastic Cover (BRK-KX-20-24)
- (1 ½") Clear PVC Cover-2 Pieces Cut Into ¾" Each (MCM-5233K69)
- (2) 5x12 Small Flange Bolt For Seat Hook (MTP-1189105012)

STOCK ITEMS TO USE

- EFI pump assembly & screws *OEM O-Rings Not Used.*
- Fuel Line
- Vent Hose
- *Seat Hook

L-Bracket Diagram Below



WARNING!

Prior to installation Clean IMS Tank Interior thoroughly. Install this fuel tank **ONLY** in a well ventilated area, as gasoline fumes are **EXTREMELY** dangerous. **DO NOT START OR OPERATE THE VEHICLE IF THERE ARE ANY FUEL LEAKS!** IMS recommends installation be performed by a licensed mechanic. Improper installation may lead to Severe Bodily Injury or Death.

Read all instructions prior to installation.

TANK REMOVAL

Drain the fuel from your stock tank into approved gasoline container. Remove the seat, then the rubber tank strap. Remove shrouds and screw holding mount at front of tank. Pick tank up off the frame to disconnect fuel line and power cable from EFI pump. Remove rear tank pad bracket (this bracket holds the lower portion of the seat strap). When tank is empty remove EFI pump taking note, order of washers and sleeves on attachment screws. Store the two OEM O-rings from pump in a sealed container with OEM fuel tank. **IMS application only requires one O-ring and it is supplied in tank hardware kit.**

TANK INSTALLATION

***Requires Separate Purchase of "RX" Radiator Shrouds That Match The Year of Your Bike & Honda Seat Hook**
P/N: #17513-MKE-AG0

Fit the IMS supplied O-ring onto the EFI pump assembly. Install pump assembly into IMS fuel tank using supplied 6x16 bolts. Four screws are inserted thru OEM aluminum collared sleeve first, then assemble all four in the following manner, Aluminum collared sleeve, IMS provided flat washer, Spring washer. Insert each screw assembly thru metal ring then plastic pump flange and into tank. Torque bolts to OEM specifications. IMS washer provides additional clearance between OEM aluminum sleeve and the aluminum fittings in IMS tank.

Set the tank on the bike, splitting the clutch and throttle cables on the left- and right-hand side of the original mounting location. Ensure that cables may move freely. Attach KX-20-24 L Brackets to the tank securing under the frame in the appropriate locations on the left- and right sides. Thread them loosely into the stock mounts on the frame while pushing the brackets firmly up against the frame rails, tighten them firmly (see illustration on Bottom Left Hand Corner).

Reinstall your OEM shrouds using the supplied hardware (Plastic collar washers and 6x12mm bolts). Install the "RX" Model OEM Seat hook to the IMS Tank using OEM hardware. Install seat. Push OEM vent hose onto vent nipple of **IMS** gas cap.

Be sure that the tank is mounted securely and does not bind or in any way inhibit the controls or function of the vehicle. Ensure that there are no sharp objects or other items that rub against the tank which may eventually be damaged or puncture the tank. Check tank to engine clearance. Fill the fuel tank and install IMS gas cap. **CHECK FOR ANY LEAKS. NO LEAKS. ENJOY YOUR RIDE!!**

"FOR COMPETITION USE ONLY"

"Legal in California ONLY for racing vehicles which may never be used upon a highway."

DISCLAIMER:

Due to uncontrolled variables in the manufacturing process of rotationally molded fuel tanks, the fuel tank may vary in size and shape by up to 7% of the manufacturer's original listed capacity