



Instruction Manual

MHES

modular handlebar extension system



V1.0

Thank You

Thank you for choosing a quality product from motogadget.

The frameless mo.view mirror series as well as the corresponding mounting and accessory parts were developed in Germany and manufactured in Berlin with great attention to detail.

Please read the following instructions completely and follow them carefully during installation and use. motogadget GmbH assumes no liability for damage resulting from failure to follow these instructions. In such cases, warranty claims cannot be accepted.

motogadget GmbH
Wollenberger Str. 4i/j
13053 Berlin

motogadget.com
service@motogadget.de

Copyright © 2017-2026 *motogadget* GmbH, Berlin.
motogadget and *mo.view* are registered
trademarks of *motogadget* GmbH

1 Inspection of Delivery

All motogadget products are carefully inspected before shipment and delivered in perfect working condition. Please check the delivered goods immediately after receipt for transport damage. If any damage is found or if the packaging appears to have been opened, please contact us immediately. Our general terms and conditions of sale and delivery apply.

If a return shipment is agreed upon, please note that we can only accept unused goods in their original packaging and within the statutory return period. We assume no liability for returns that are inadequately packaged or insufficiently insured.

2 Liability Disclaimer

Installation should be carried out by qualified personnel in a professional workshop. motogadget accepts no liability for direct or indirect damage or for consequential damages of any kind resulting from the use, installation, or connection of this product or the supplied accessories. This applies in particular to personal injury, property damage, and financial loss.

Compliance with applicable legal regulations and vehicle approval requirements is the responsibility of the vehicle owner.

4 MHES - The Concept

The MHES (Modular Handlebar Extension System) is a modular system consisting of interchangeable components. It allows the installation of motogadget mo.view mirrors on handlebar ends with outside diameters of 1" (25,4mm) or 7/8" (22,2mm). Installation is possible on handlebars with or without an internal thread. The handlebar end can be finished either with a cover or the mo.blaze disc handlebar end indicators.

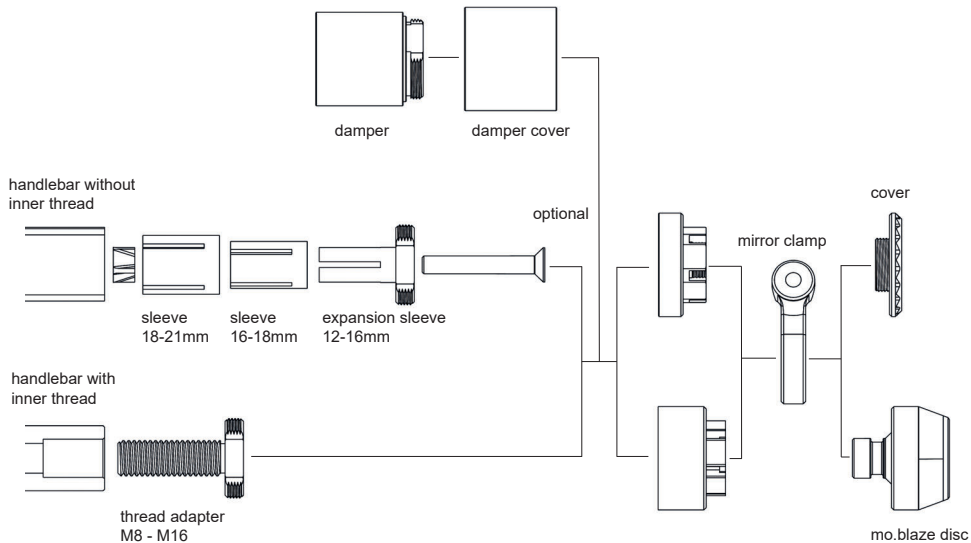
The handlebar is excited by engine vibrations. Changes to the handlebar configuration, especially changes in weight at the handlebar end, may increase vibrations in the grip area.

If vibrations occur after installing the mirror, they can be reduced by installing an optional vibration damper.

5 Variants and SKUs

handlebar with inner thread (M6 - M16)		handlebar without inner thread		vibration damper
cover	mo.blaze disc	cover	mo.blaze disc	
7009103	7009109	7009100	7009101	7009102
7009104	7009110			
7009105	7009111			
7009106	7009112			
7009107	7009113			

6 MHES overview



7 Preparing the Handlebar

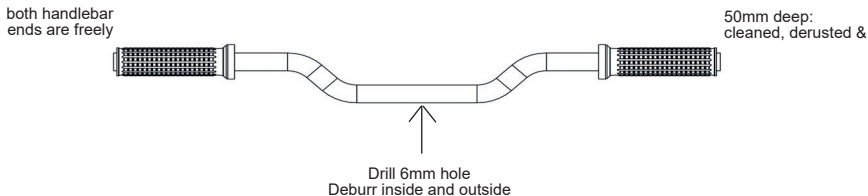
Remove any existing mirrors, handlebar end caps, or handlebar weights.

If the existing closed rubber grips are to be reused, cut the ends of the grips evenly at the handlebar end using a utility knife.

Slightly loosen the clamping screws of the throttle assembly and move both grips approximately 5 mm toward the center of the handlebar so that the handlebar tubes are exposed on both sides

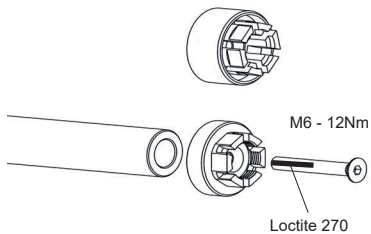
Clean the handlebar ends to a depth of 50 mm (insertion depth of the adapter), remove rust, degrease with alcohol or brake cleaner. Then remove any burrs and sharp edges using a file.

If mo.blaze disc indicators are installed, drill a 6 mm hole in the underside of the handlebar. Before drilling, ensure that no cables or wires are located inside the handlebar. After drilling, carefully deburr the hole on both sides using a round file.

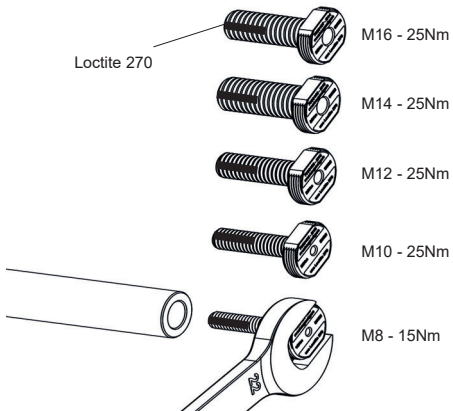


8 Installing the Internal Handlebar Clamp

A) handlebar with inner thread M6

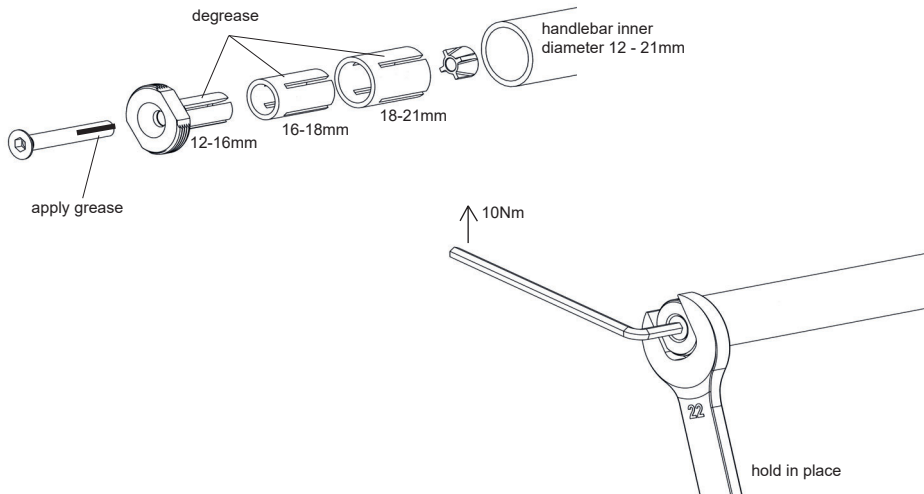


B) handlebar with inner thread M8 - M16

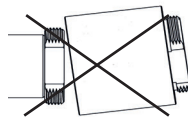
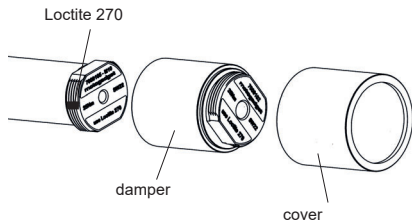


8 Installing the Internal Handlebar Clamp

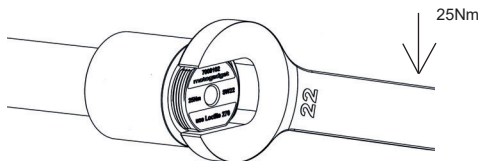
C) *handlebar without inner thread*



9 Optional – Installing the Vibration Damper



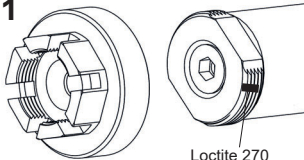
Screw the damper in by hand until it reaches the stop.
Do not use tools. Do not tilt or cross-thread.



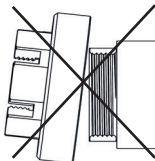
10 Installing the Mirror

A) Handlebar end with cover

1

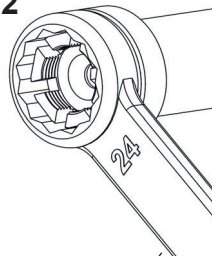


Loctite 270



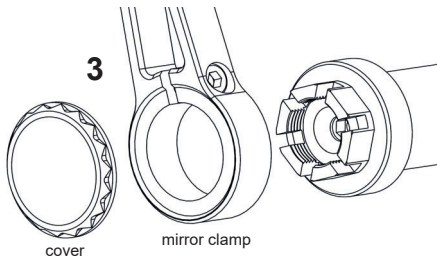
Screw by hand until it reaches the stop. Do not use tools. Do not tilt or cross-thread.

2



20Nm

3

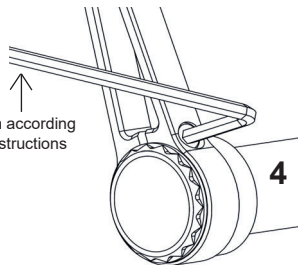


cover

mirror clamp

Nm according instructions

4

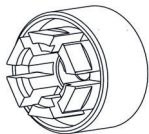


First screw cover by hand until it reaches the stop. Then tighten the mirror clamping screw.

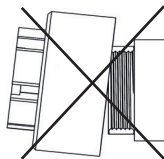
10 Installing the Mirror

b) Handlebar end with mo.blaze disc

1

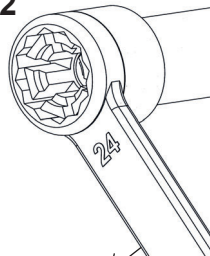


Loctite 270



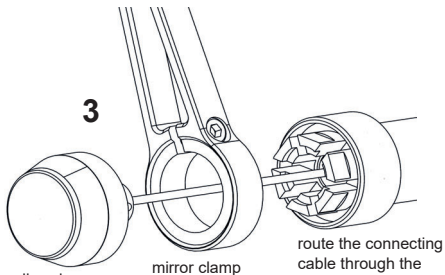
Screw by hand until it reaches the stop.
Do not use tools. Do not tilt or cross-thread.

2



20Nm

3



route the connecting cable through the

mo.blaze disc observe
left/right orientation logo
facing upwards

mirror clamp

Nm according
Instructions

4

First press the mo.blaze disc against the mirror clamp.
Then tighten the mirror clamping screw.

We hope you enjoy your new mirrors.

**If you are ever dissatisfied, please give us the opportunity to
resolve the issue and contact us at
support@motogadget.de**