



Instruction manual
mo.view

glassless rear mirror



V1.6

Thank you very much for purchasing a high quality motogadget product. - Made in Germany.

Please read the following information and recommendations carefully and follow these instructions during installation and use of the product.

motogadget GmbH
Wollenberger Str. 4i/j
13053 Berlin, Germany

motogadget.com
service@motogadget.de

Copyright © 2017-2026 *motogadget* GmbH, Berlin.
motogadget and *mo.view* are registered trademarks
of *motogadget* GmbH, Berlin, Germany

1 Review of Delivery

Every motogadget product is delivered in perfect working order. Please check that the goods you received have not been damaged in transit. If there is any damage or the packaging has been opened, please contact us immediately. Our general terms and conditions apply. If a return is agreed with us, please ensure that we only accept goods in their original package and without signs of use within the statutory periods. We accept no liability for returns that are inadequately insured or packaged.

2 Exclusion of Liability

The device and its accessories must be installed exclusively by certified motorcycle technicians in an authorized service center.

motogadget shall not be liable for any direct, indirect, incidental, or consequential damages of any kind arising from the use, installation, or connection of the device or any supplied accessories, including but not limited to personal injury, property damage, and financial loss.

Use on public roads is at the user's own risk.

Any use of the device and its accessories for racing, competition, or for purposes other than those recommended shall void all warranty claims.

3 Features

motogadget mo.view mirrors are unique. They are made from one piece of aluminum and are unbreakable, super thin, frameless and many times lighter than conventional glass mirrors. The lower weight reduces the vibrations of the mirror and thus significantly improves the view.

The reflecting surface is milled directly into the aluminum body by diamond cutting tools and then coated with a wafer-thin, glassy layer of silicon dioxide (SiO_2). This coating is UV, weather and chemical and abrasion resistant.

An object viewed in a glass mirror is reflected twice. First at the glass surface and a second time at the reflective coating on the underside of the glass plate. This causes a slightly blurred image. Because an object viewed in a metal mirror is reflected only once, the visible image is sharper and appears clearer.

4 Handling glassless mirrors

Although the coating ensures abrasion resistance, glassless mirrors are more sensitive than glass mirrors.

Contact with hard objects may damage the mirror surface. The protective film must remain on the mirror during installation. The film may only be removed after the attachment to the handlebar is done.

Metal objects such as jacket zips, helmet buckles, watch straps, rings, rivets, keys, vehicle parts etc. can damage the mirror surface. Do not place your helmet on the mirrors, as the metal helmet buckle may scratch the mirror surface. Clean the mirror using only water, mild soap, and a soft cloth. Do not use abrasive cleaning agents or hard objects.

5 Vibrations

The handlebars are stimulated to vibrate by motor vibrations. Changing the handlebar configuration, i.e. changing the weight, particularly at the end of the handlebars, can lead to an increase in vibrations in the grip area.

Permanent, strong vibrations in the grip area can lead to numbness in the hands, reduced visibility in the rear-view mirror or even breakage of the mirror arm.

If strong vibrations occur in the grip area after removing handlebar end caps, grips, shortening the handlebars, etc., handlebar weights are required to reduce these vibrations.

6 Installation - 110 / 150 / 180mm arm

CLASSIC

E-Mark 009806
Type 7002010
Version 7002080 / 7002083
7002070 / 7002073
7002060 / 7002063
7004010



CLUB

E-Mark 009807
Type 7002020
Version 7003080 / 7003083
7003070 / 7003073
7003060 / 7003063
7004020



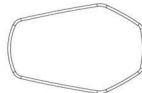
SPORT

E-Mark 009808
Type 7002030
Version 7004080 / 7004081
7004070 / 7004073
7004090 / 7004091
7004030



DRIFT

E-Mark 009885
Type 7006010
Version 7006011
7006083
7006070



RACE

E-Mark 009809
Type 7002040
Version 7002041 / 7004040 / 7004041
7008068 / 7008070 / 7008069
7008071 / 7008064 / 7008066
7008065 / 7008067 / 7008060
7008062 / 7008061 / 7008063



Part of delivery are 3 screws: M10x1.5 / M10x1.25 (one groove at head) and M10x1.25 left-hand thread (two grooves at head).

Grease the thread of the M10 screw well before mounting. After aligning the mirror, the M10 screw is tightened with a torque of **20Nm** and the M6 screw in the mirror arm with a torque of **8Nm**.

7 Installation - pivot clamp 110mm arm

CLASSIC

E-Mark 009806
Type 7002010
Version 7002061
7002062

CLUB

E-Mark 009807
Type 7002020
Version 7003061
7003062

SPORT

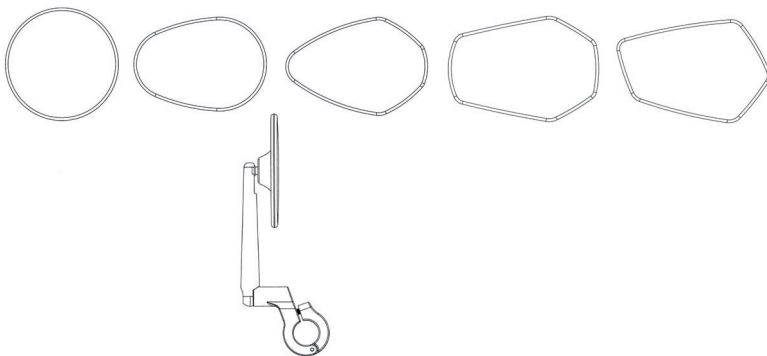
E-Mark 009808
Type 7002030
Version 7004092
7004093

DRIFT

E-Mark 009885
Type 7006010
Version 7006061
7006062

RACE

E-Mark 009809
Type 7002040
Version 7008056 / 7008058
7008057 / 7008059



Remove the M5 clamping screw from the clamp and open the clamp. Find a suitable place on the handlebars and put on the clamp and tighten the M5 clamping screw to **4Nm**.

After aligning the mirror arm, the M6 mirror arm screw is tightened with a torque of **8Nm**.

8 Installation - 130mm arm

CLASSIC

E-Mark 009806
Type 7002010
Version 7003020
7002052

CLUB

E-Mark 009807
Type 7002020
Version 7003030
7003052

SPORT

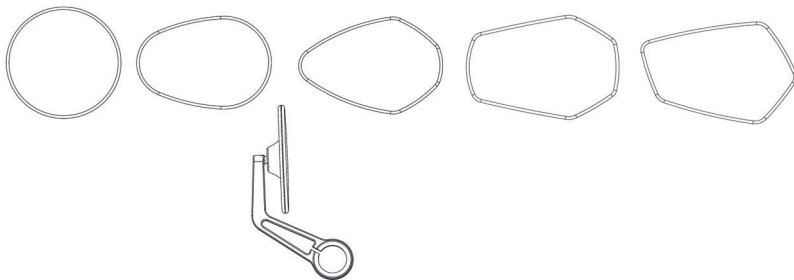
E-Mark 009808
Type 7002030
Version 7003020
7002052

DRIFT

E-Mark 009885
Type 7006010
Version 7006052

RACE

E-Mark 009809
Type 7002040
Version 7008054 / 7008055



After aligning the mirror, the M5 clamping screw inside the arm is tightened with a torque of **4Nm**.

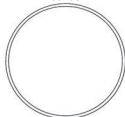
The mirror arms are made of anodized aluminum. The high-quality surface is ceramic like and very hard, but can still be worn away by permanent friction contact with gloves.

Select the mirror location so that your gloves cannot come into contact with the mirror arms.

9 Installation - 60mm arm

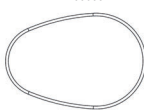
CLASSIC

E-Mark 009806
Type 7002010
Version 7005010 / 7002050
7002051



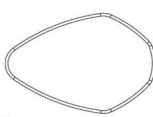
CLUB

E-Mark 009807
Type 7002020
Version 7005020 / 7003050
7003051



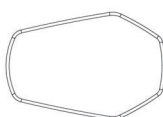
SPORT

E-Mark 009808
Type 7002030
Version 7003050 / 7004050
7004051



DRIFT

E-Mark 009885
Type 7006010
Version 7006050
7006051



RACE

E-Mark 009809
Type 7002040
Version 7008050 / 7008052
7008051 / 7008053



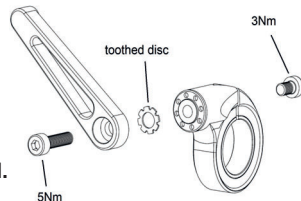
Standard Version

The mirror must be aligned above the handlebar. The vertical distance between the ball head and the clamp must be 40mm. After aligning the mirror, the M6 clamping screw in the arm is tightened with a torque of **3Nm**.

Version with Flip - mechanism

Tighten the M5 screw for clamping the handlebar with **3Nm**.
Tighten the M6 screw in the mirror stem with **5Nm**.

The adjustment function only works with the **toothed disc installed and the correct tightening torque applied.**



10 Installation - 50 mm arm

SPY

Type 7001010



BLADE

Type 7001020



Standard Version

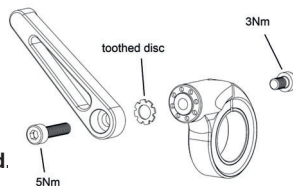
After aligning the mirror, the M5 clamping screw in the arm is tightened with a torque of **3 Nm**.

Version with Flip - mechanism

Tighten the M5 screw for clamping the handlebar with **3 Nm**.

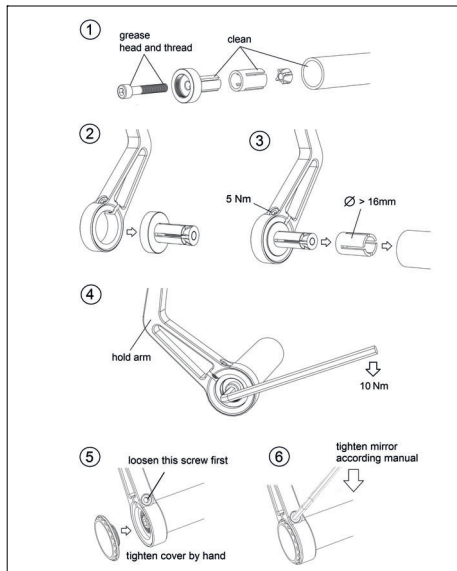
Tighten the M5 screw in the mirror stem with **5 Nm**.

The adjustment function only works with the toothed disc installed and the correct tightening torque applied.

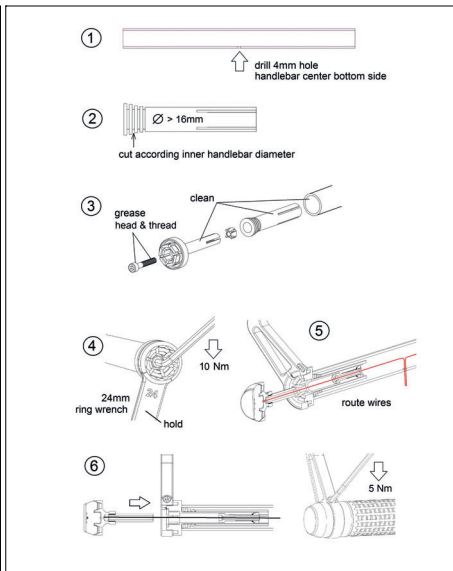


11 Handlebar-End-Adapters - Overview 1

mo.view bar adapter universal (SKU 7001060)
mirror & cover

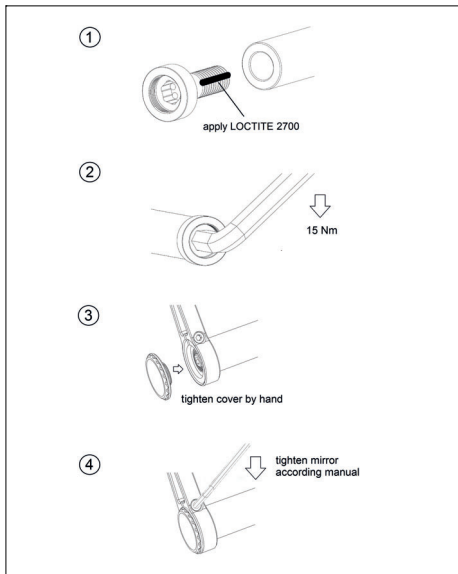


mo.view bar adapter universal (SKU 7001061)
mirror & mo.blaze disc / mo.blaze cone

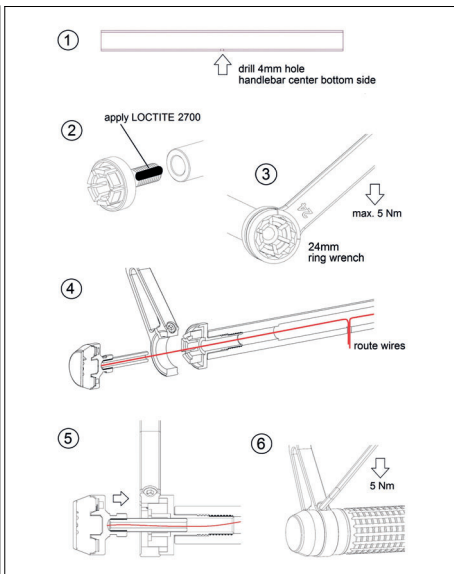


11 Handlebar-End-Adapters - Overview 2

mo.view bar adapter BMW (SKU 7001062)
mirror & cover



mo.view bar adapter BMW (SKU 7001063)
mirror & mo.blaze disc / mo.blaze cone



12 Installation of the Handlebar-End-Adapters - Important Information

Compatibility and installation of mo.view mirror arms on universal handlebar end adapters

Our universal handlebar end adapters are compatible with all mo.view mirror arms. The clamp width varies between 8 mm and 12 mm depending on the mirror arm type. When mounting the 60mm or 130mm mirror arms, only a portion of the mirror's clamping surface is used.

This is due to the design and is not critical – the attachment is still secure and permanently stable.

Installation instructions for the cover and mirror clamp

Before screwing on the cover, the mirror clamp must be completely loosened. The cover is screwed onto the handlebar end adapter by hand until it makes contact with the mirror arm. The mirror is then secured to the handlebar end by tightening the clamping screw (please observe the torque specification).

Note: Even if the cover is only screwed in about one turn, the attachment is mechanically secure. Due to the design of the handlebar end adapter, the cover is also reliably clamped when the mirror arm is tightened, thus preventing it from being lost.

We hope you enjoy your new rear-view mirrors and look forward to your positive review.

Should you ever be dissatisfied, please give us the opportunity to resolve the issue and contact us at support@motogadget.de